



MOODY•NOLAN



HangoutArea
WasherDryer
TutoringFurnished
BasketballSecureEntry
Workoutroom
OfficesPatio
30Units
Financial
CounterWifi
ParkBicycleStorage
RARooms
Bookshare
Support
WallofFame
ComputerLab
Conferences
Kitchen
Parking

CHOLAR HOUSE

Q & A



1 Fiber cement siding and wood.

2 Neutral with some wood tones.

3 Brick.

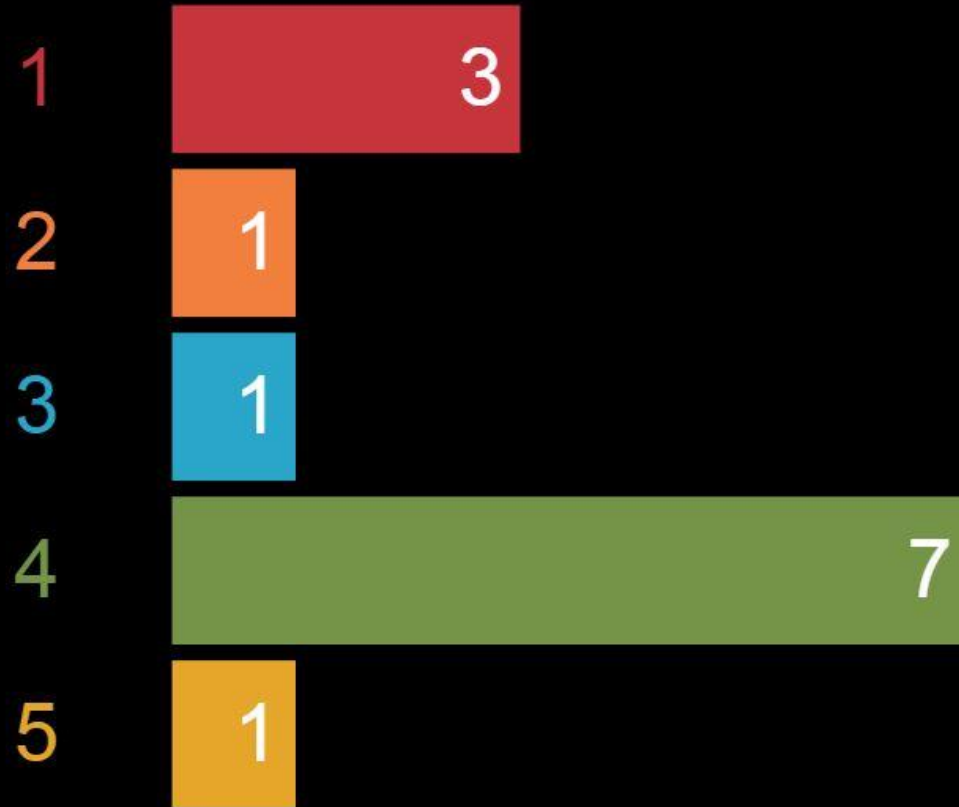
4 Fiber cement siding and some brick.

5 Color.



MATERIALS|
SELECT YOUR FAVORITE IMAGE

Pick your favorite or the image that best describes what you would like.



RESULTS



1 Like a living room.

2 Smaller with a loft space.

3 Open with cool furniture.

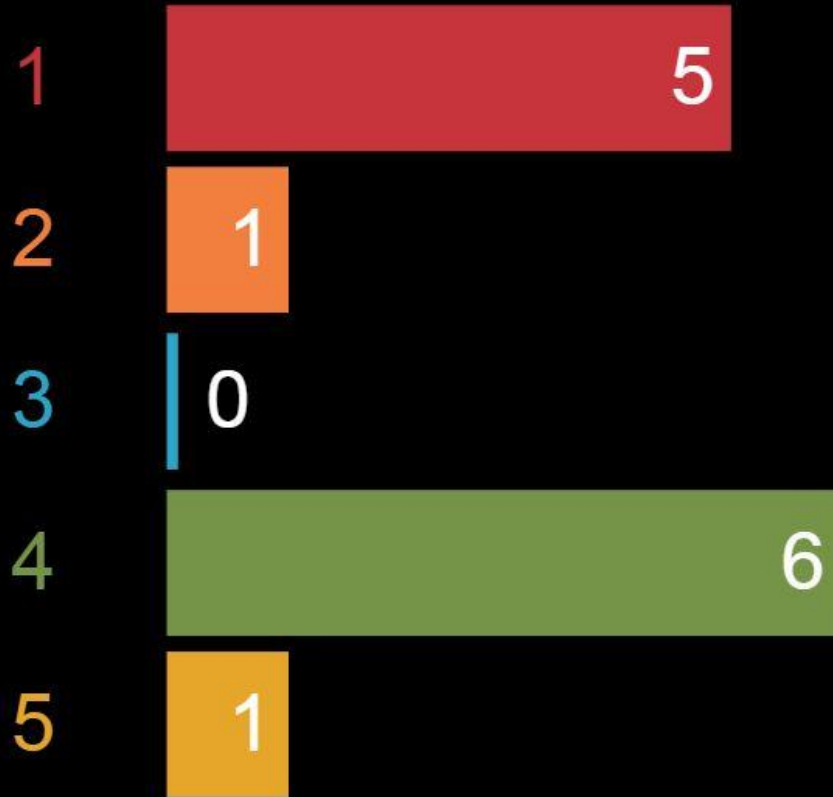
4 Modern living room.

5 Open and able to see everything happening.

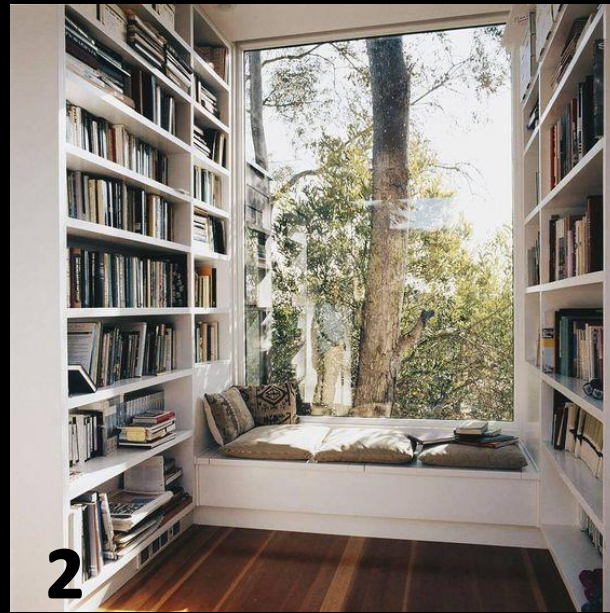


COMMUNITY SPACE |
SELECT YOUR FAVORITE IMAGE

Pick your favorite or the image that best describes what you would like.



RESULTS



1 Real walls are not important “private zone”.

2 A nook connected to nature.

3 Smaller lounge on each floor.

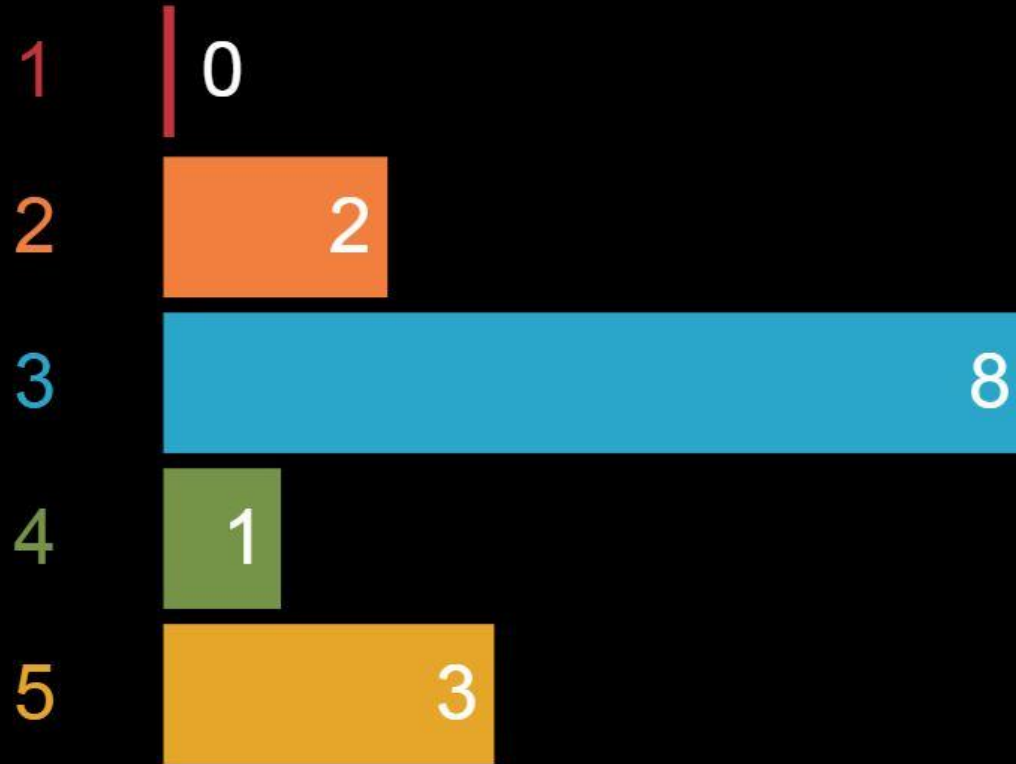
4 Just a desk to study or surf the web.

5 It's not private without a door.

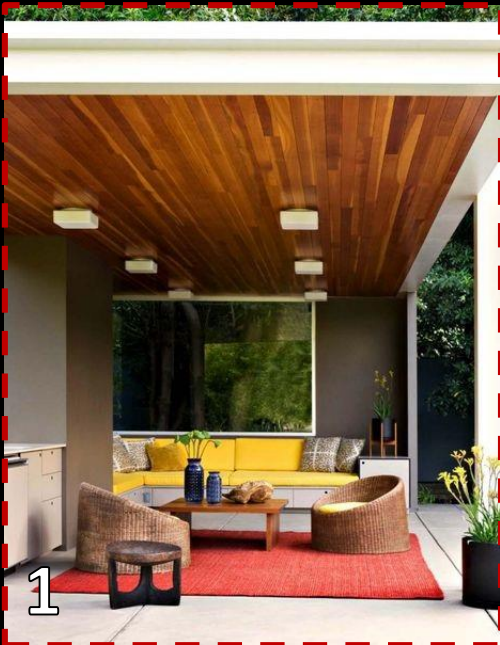


PRIVATE SPACE |
SELECT YOUR FAVORITE IMAGE

Pick your favorite or the image that best describes what you would like.



RESULTS



1 Partial covered patio.

2 Somewhere to sit and grow plants.

3 Zone to relax outside of patio.

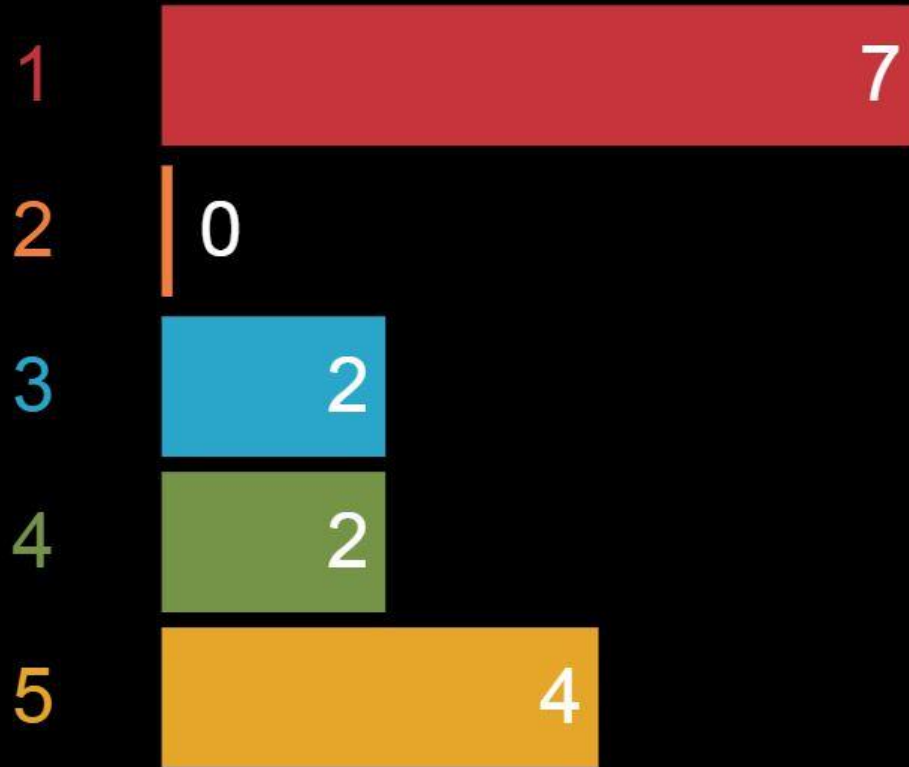
4 Versatility. Like a shed where you can also project movies.

5 Outdoor entertainment/Basketball court.

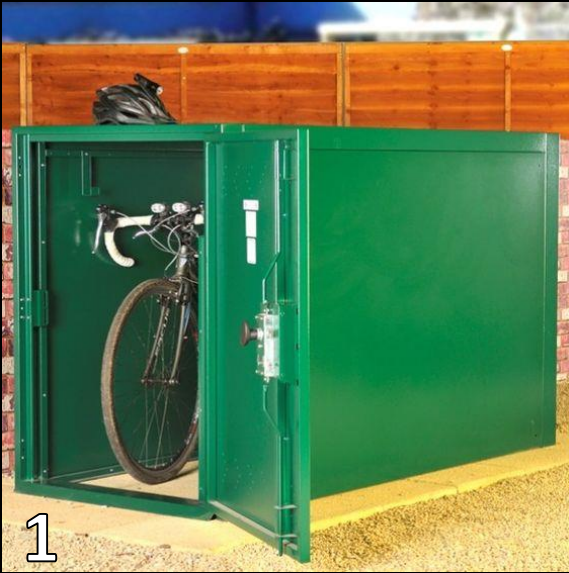


OUTDOOR SPACE |
SELECT YOUR FAVORITE IMAGE

Pick your favorite or the image that best describes what you would like.



RESULTS



- 1 Individual bike locker.
- 2 Open in a locked room.
- 3 Rather have access to rental bikes.
- 4 Stored in common space.
- 5 My bike is art I'd rather have storage for something else.

STORAGE SPACE |
SELECT YOUR FAVORITE IMAGE

Pick your favorite or the image that best describes what you would like.

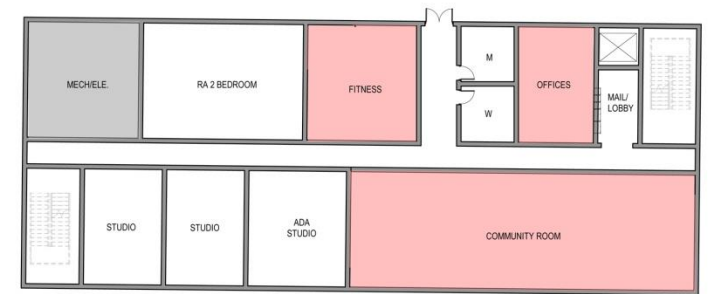


RESULTS

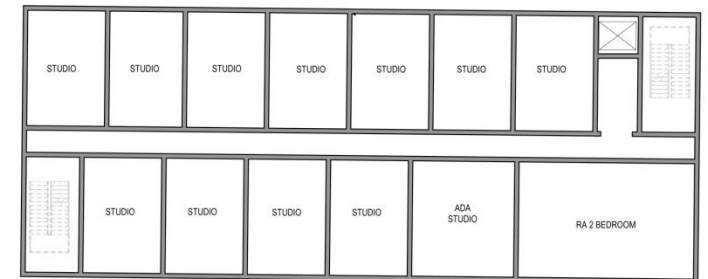


Scholar House Bar Scheme

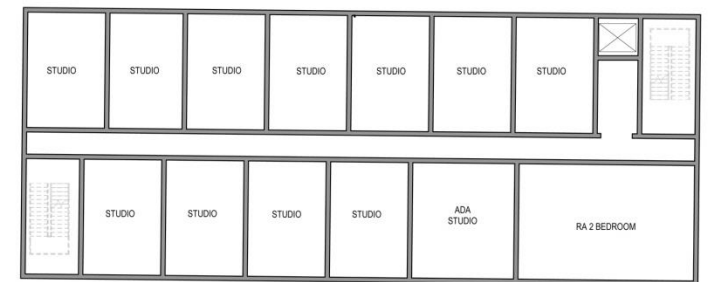
PROPOSED BUILDING SITE AND MASSING|



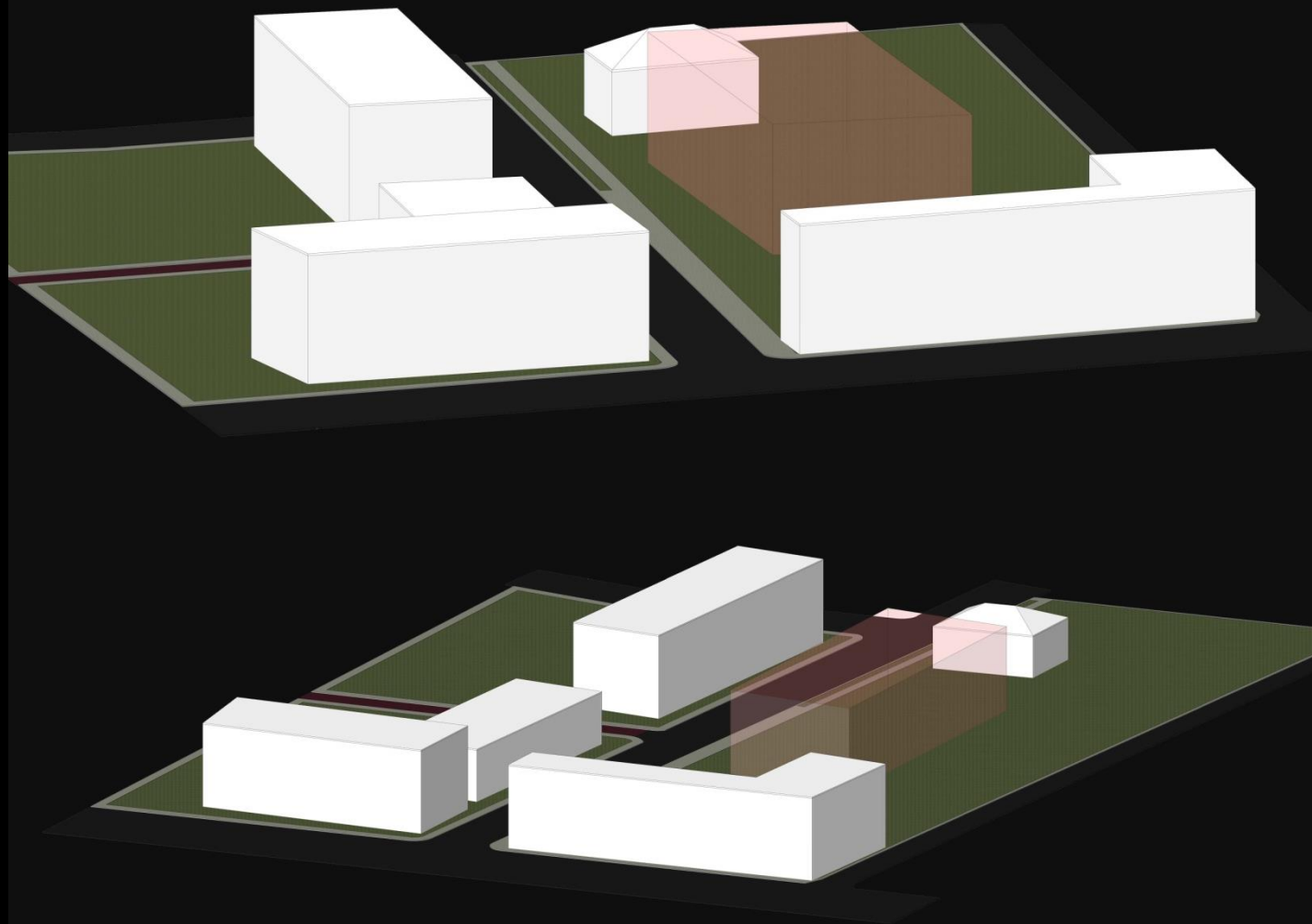
First Floor



Second Floor



Third Floor



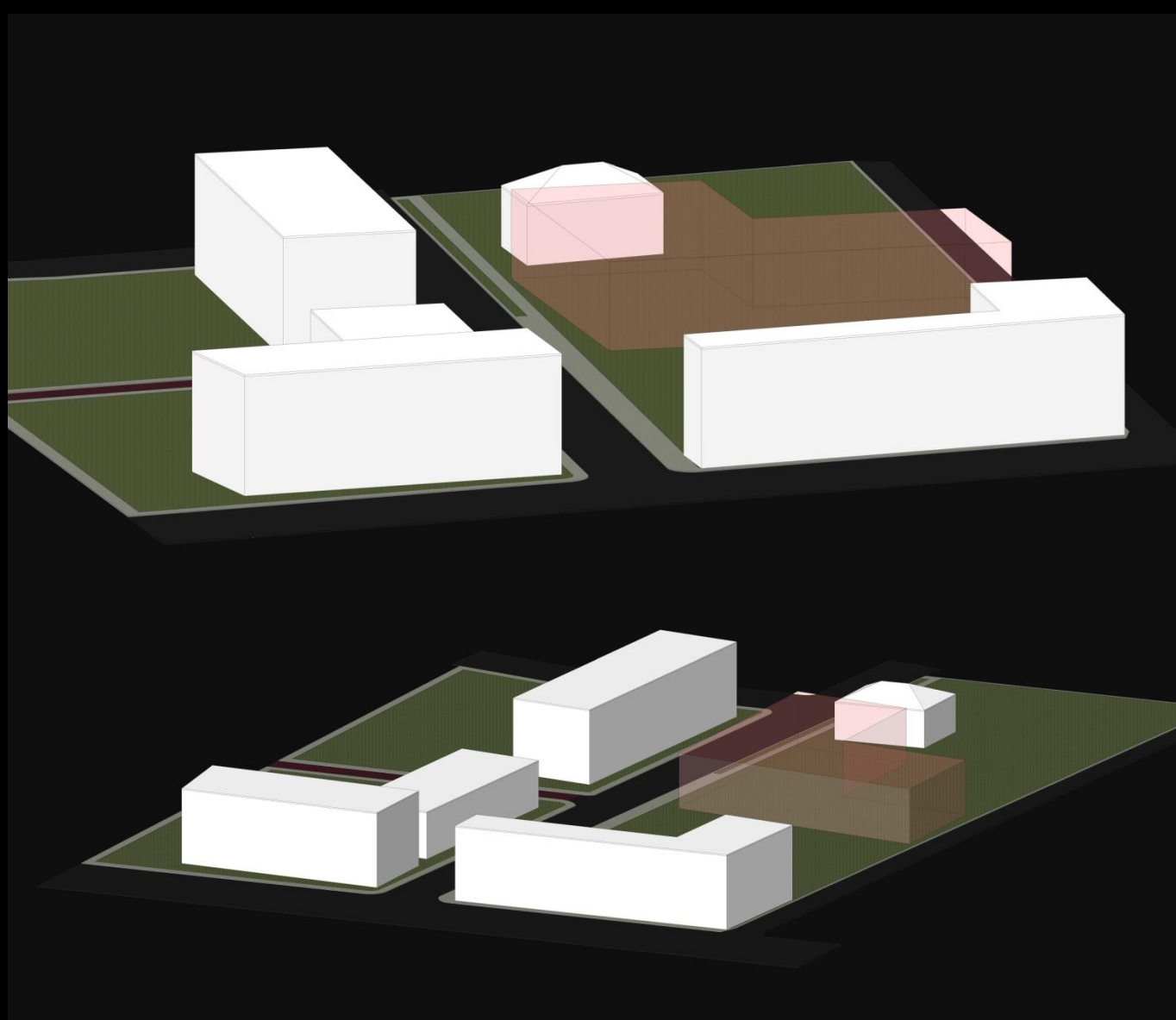
PROPOSED BUILDING SITE AND MASSING |



Scholar House L- Scheme

PROPOSED BUILDING SITE AND MASSING|





PROPOSED BUILDING SITE AND MASSING |



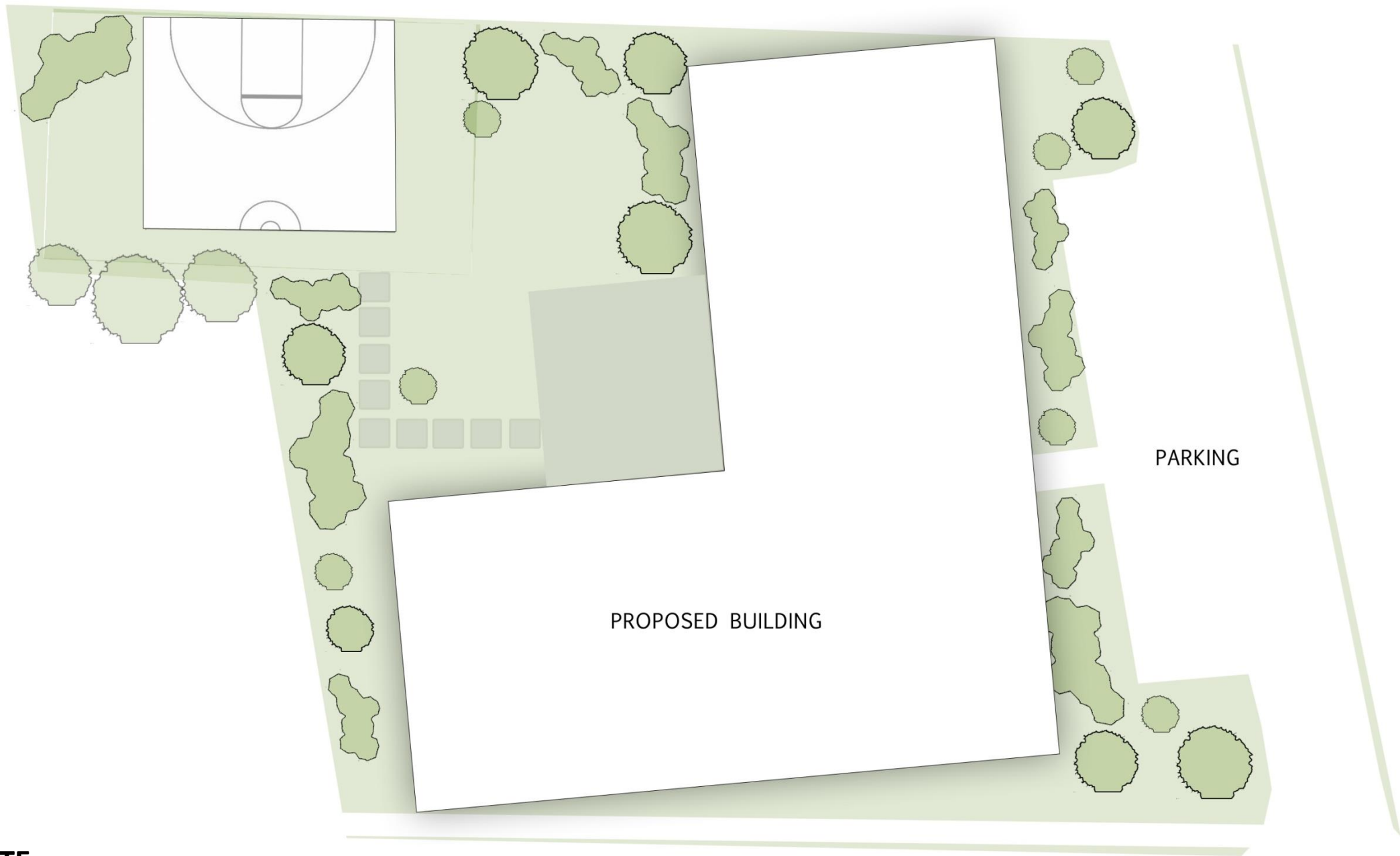
Studio Unit 486 SF



- 1 L-shape allows for two-level apartments to create more of a community environment. (Favored)
- 2 Half- court to allow for more yard space
- 3 Loft space allowing for designated program space.
- 4 Interior bike storage.
- 5 Rotate to allow primary pedestrian entry from 17th street.
- 6 Place activity along the 17th street for community interaction.
- 7 RA Units on corner as incentive with larger studio.
- 8 Overall positive reaction to unit layout with possible combination of bathroom (jack and jill) and bedroom clerestory.

DESIGN CHANGES |

PER COMMUNITY MEETING 09.29.2017



SITE

FIRST FLOOR



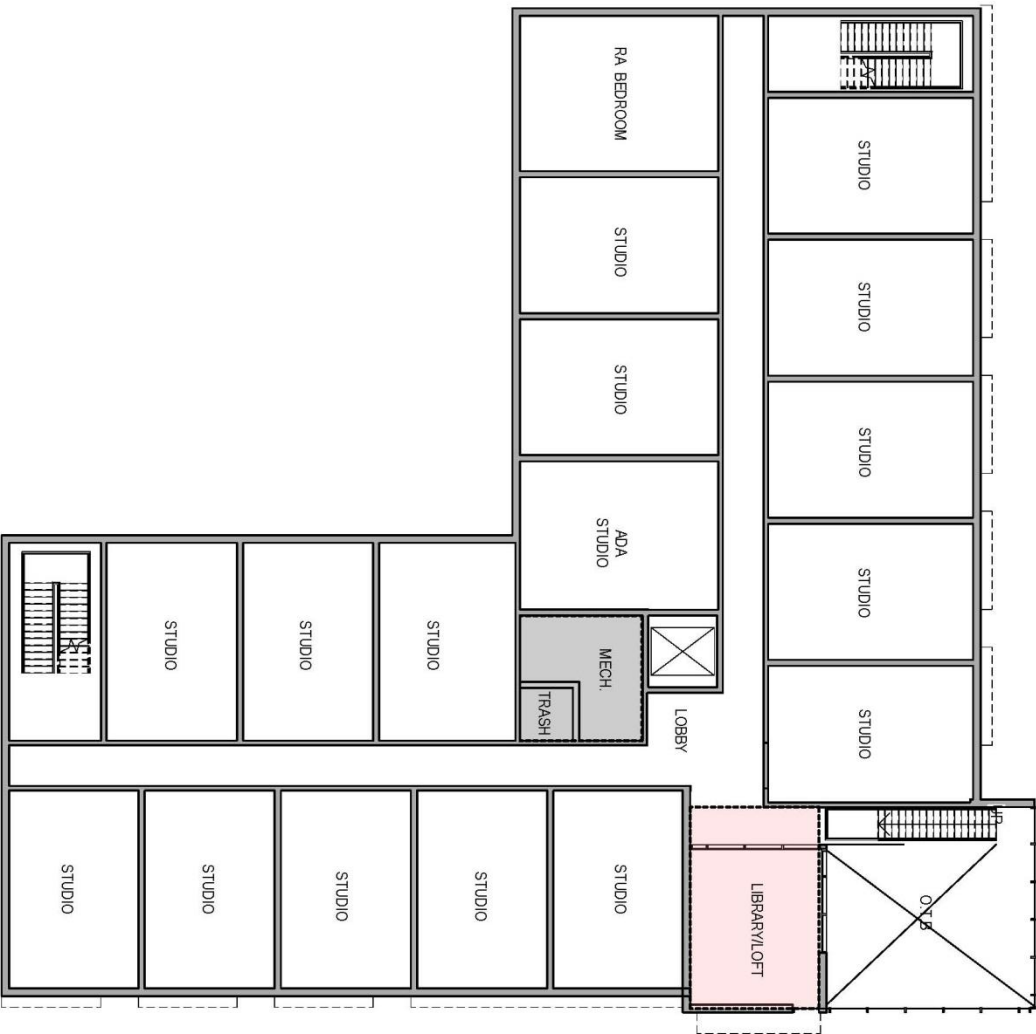


PROPOSED BUILDING SITE AND MASSING |

SECOND FLOOR



- 1 Create more opportunity for privacy in loft/library space. Add sliding doors and connect to hallway.
- 2 Add trash rooms.
- 3 Move mechanical for better access.
- 4 Separate door for bike storage.
- 5 Add larger machine rooms.
- 6 Test community room configurations.
- 7 Test opportunity to break building mass into “individual house” segments.
- 8 Possible return to full court for future parking and buffer between patio and building to create privacy for studios.



SECOND FLOOR



FIRST FLOOR



PRELIMINARY MASSING |

THANK YOU!



MOODY•NOLAN